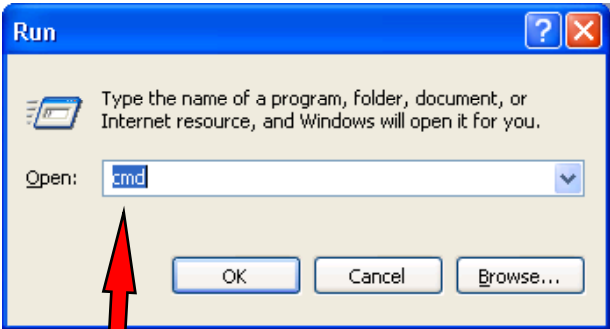
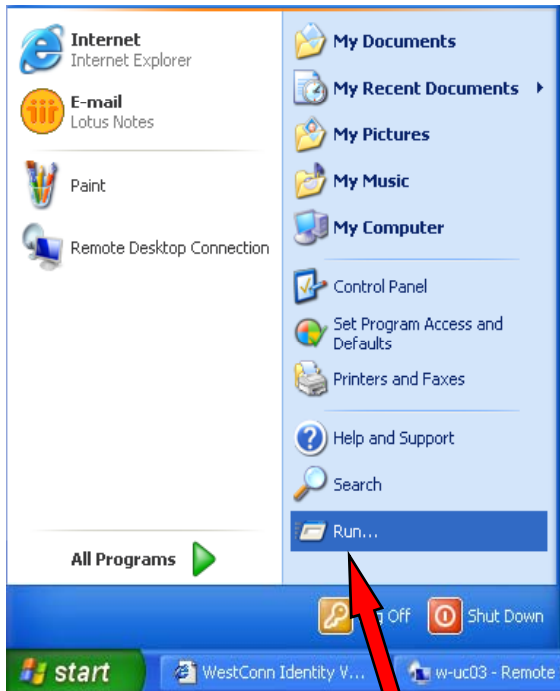
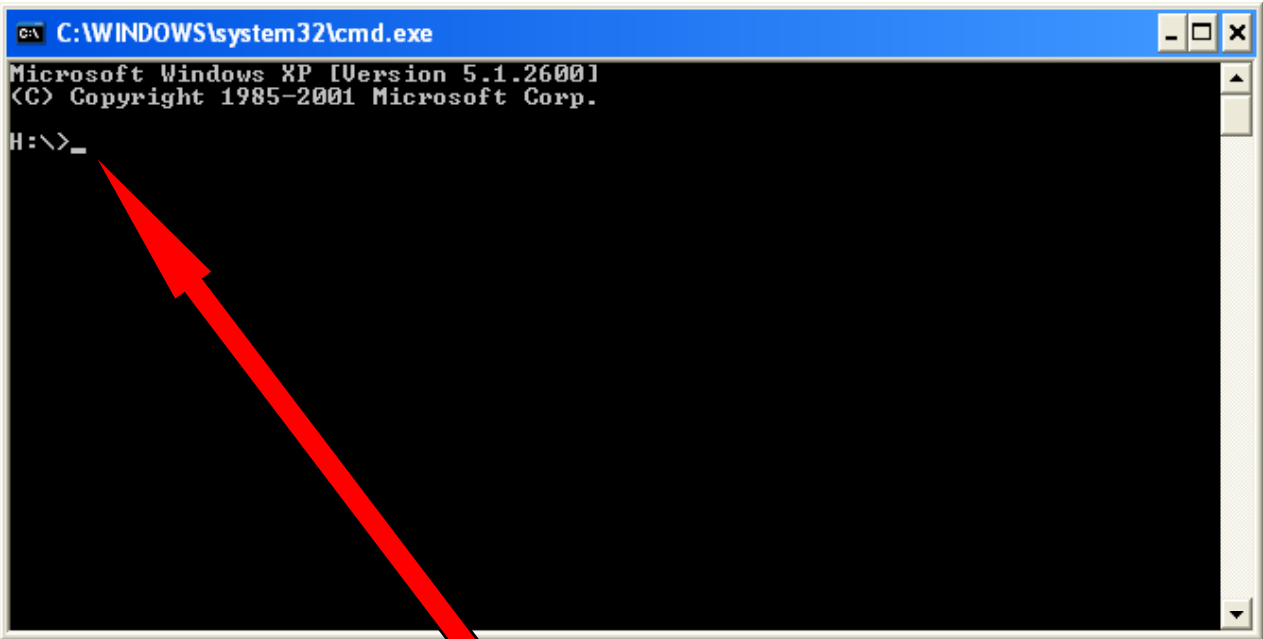


IP Address Verification



Go to **Start** => **Run** => Type **cmd**



At the prompt, type **ipconfig /all**

Verify IP address

```
C:\WINDOWS\system32\cmd.exe
Microsoft Windows XP [Version 5.1.2600]
(C) Copyright 1985-2001 Microsoft Corp.

H:\>ipconfig /all

Windows IP Configuration

    Host Name . . . . . : W-UC03
    Primary Dns Suffix . . . . . : wcsu.local
    Node Type . . . . . : Hybrid
    IP Routing Enabled. . . . . : No
    WINS Proxy Enabled. . . . . : No
    DNS Suffix Search List. . . . . : wcsu.local
                                        wcsu.edu
                                        westconn.edu
                                        ctstateu.edu

Ethernet adapter Local Area Connection:

    Connection-specific DNS Suffix . : wcsu.edu
    Description . . . . . : Intel(R) PRO/1000 MT Mobile Connecti
on
    Physical Address. . . . . : 00-11-25-2D-DA-58
    Dhcp Enabled. . . . . : Yes
    Autocconfiguration Enabled . . . . . : Yes
    IP Address. . . . . : 149.152.206.102
    Subnet Mask . . . . . : 255.255.254.0
    Default Gateway . . . . . : 149.152.206.254
    DHCP Server . . . . . : 149.152.215.41
    DNS Servers . . . . . : 149.152.214.87
                            149.152.50.1
                            149.152.13.1
                            149.152.13.2
    Primary WINS Server . . . . . : 149.152.214.89
    Secondary WINS Server . . . . . : 149.152.215.41
    Lease Obtained. . . . . : Monday, January 22, 2007 8:29:05 AM
    Lease Expires . . . . . : Thursday, January 25, 2007 8:29:05 A
M

H:\>
```

IP address should show as
Midtown Campus 10.129.XXX.XXX
Westside Campus 10.145.XXX.XXX

If not, press **F3** and backspace to remove the word **all**
Then type **release** (should read **ipconfig /release**)

```
C:\WINDOWS\system32\cmd.exe

H:\>ipconfig /release

Windows IP Configuration

Ethernet adapter Local Area Connection:

    Connection-specific DNS Suffix . :
    IP Address. . . . . : 0.0.0.0
    Subnet Mask . . . . . : 0.0.0.0
    Default Gateway . . . . . :
```

IP address should show as
0.0.0.0

Once again, press **F3** and backspace to remove the word **release**
Then type **renew** (should read **ipconfig/renew**)

```
C:\WINDOWS\system32\cmd.exe
H:\>ipconfig /release
Windows IP Configuration

Ethernet adapter Local Area Connection:

    Connection-specific DNS Suffix  . : 
    IP Address. . . . .               : 0.0.0.0
    Subnet Mask . . . . .             : 0.0.0.0
    Default Gateway . . . . .         : 

H:\>ipconfig /renew
The current directory is invalid.

H:\>ipconfig /renew
The current directory is invalid.

H:\>c:
C:\>ipconfig /renew
Windows IP Configuration

Ethernet adapter Local Area Connection:

    Connection-specific DNS Suffix  . : wcsu.edu
    IP Address. . . . .               : 149.152.48.102
    Subnet Mask . . . . .             : 255.255.254.0
    Default Gateway . . . . .         : 149.152.48.254

C:\>
```

IP address should show as
Midtown Campus 10. 129.XXX.XXX
Westside Campus 10.145.XXX.XXX